

# Cost of the Ebola Epidemic

## 2014 Ebola Epidemic



The 2014 Ebola epidemic was more than 11x larger than all previous outbreaks combined

All Other Ebola Outbreaks  
**1,597** deaths

As of February 28, 2016, there were 28,639 suspected, probable, and confirmed cases of Ebola and 11,316 deaths from Ebola during the 2014 epidemic in West Africa. In comparison, there were 2,427 reported cases and 1,597 deaths in all other known cases and outbreaks of Ebola combined.

## The Impact

### Impact of Ebola on the Economy

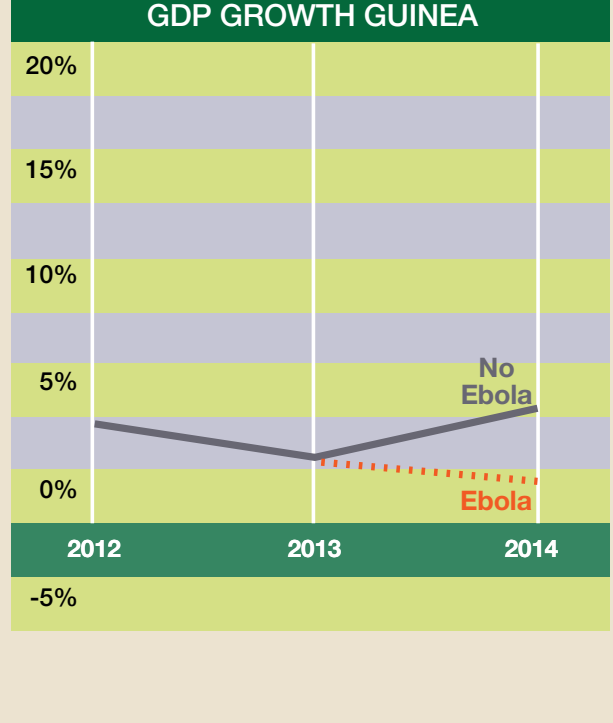
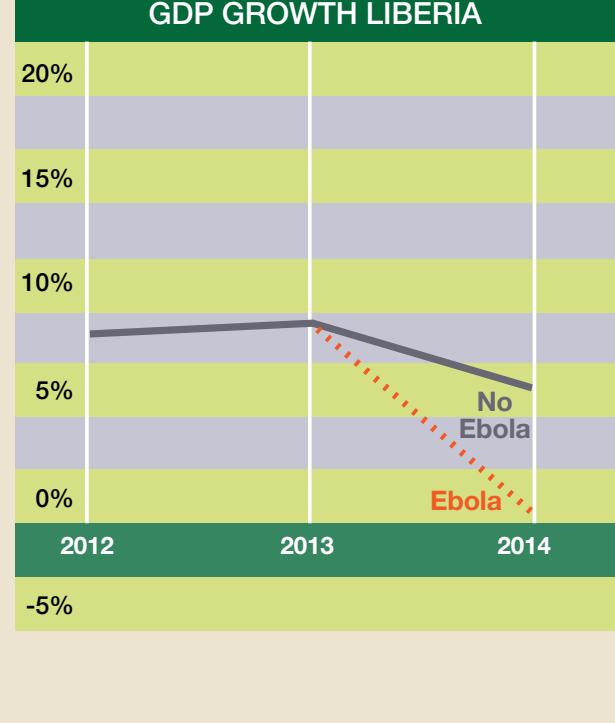
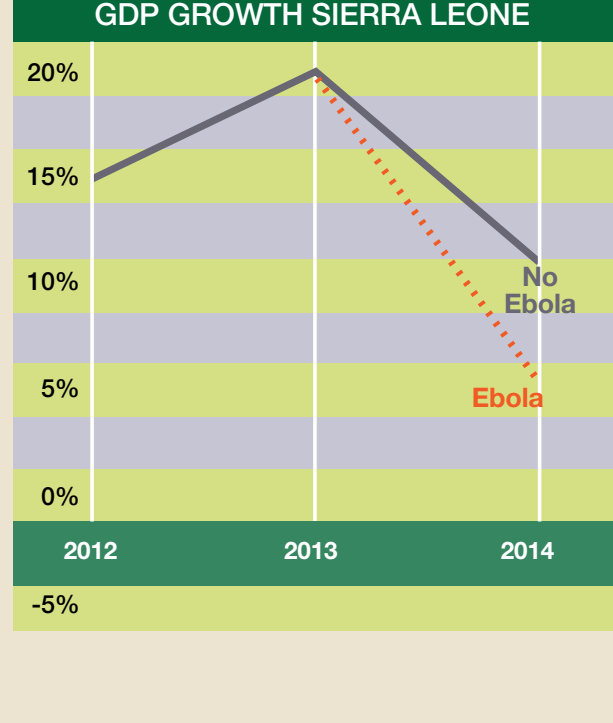
#### Effect on global economy

**50%** Sierra Leone's private sector has lost half its work force.



**\$2.2 billion** in GDP was lost in Guinea, Liberia, and Sierra Leone in 2015, threatening not only macroeconomic stability but also food security, human capital development, and private sector growth.

#### Estimated GDP growth based on World Bank 2014 projections



### Impact of Ebola on the Healthcare System

#### Healthcare providers were at highest risk

**881** doctors, nurses, and midwives were infected with Ebola in West Africa

**513** died because of Ebola

**8%** reduction of healthcare workforce from Ebola in Liberia

**23%** decrease in health services delivery in Sierra Leone

### Indirect Impact of Ebola on Health Care

#### Hidden impact on health care



**1,091** additional estimated deaths due to HIV

**2,714** additional estimated deaths due to tuberculosis

**6,818** additional estimated deaths due to malaria

The reduction in access to healthcare services because of Ebola caused an estimated **10,600** additional deaths due to untreated conditions in Guinea, Liberia, and Sierra Leone

### Impact of Ebola on Children

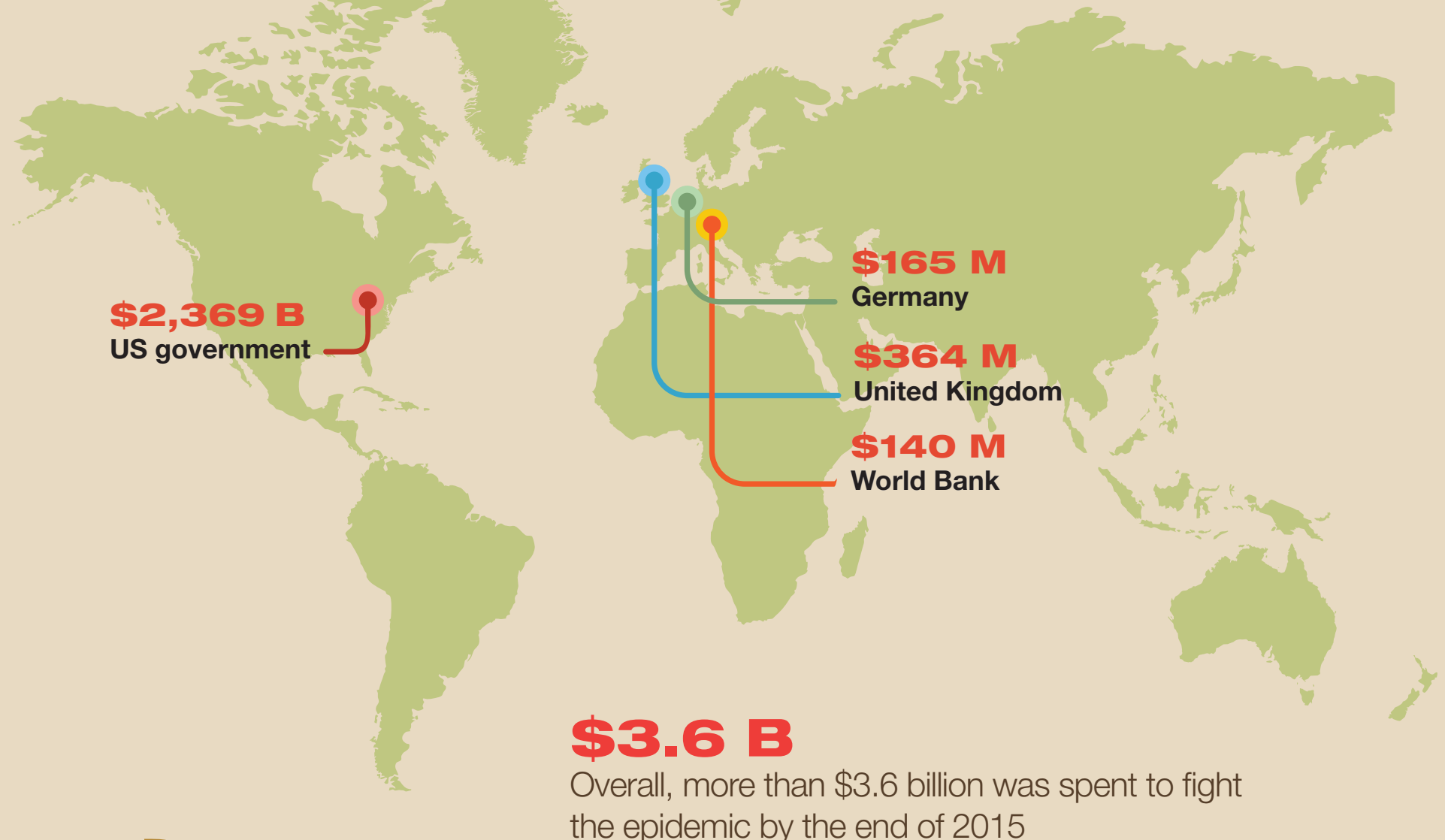
**17,300** children lost one or both parents to Ebola

More than **33 weeks** of education were lost due to school closures

**30%** decline in childhood vaccination coverage

## The Response

### Cost of the Response



**3** new emergency operations centers were set up in Guinea, Liberia, and Sierra Leone

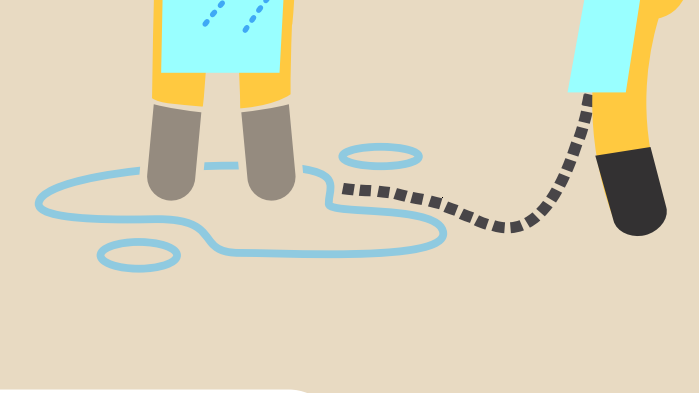
### Impact of the Response on Travel

More than **339,000** people were screened flying out of Guinea, Liberia, and Sierra Leone to prevent the spread of Ebola

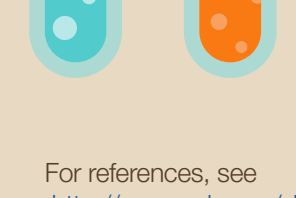


### Impact of the Response on the Healthcare System

**24,655** healthcare workers were trained in infection prevention and control in West Africa



**24** labs in Guinea, Liberia, and Sierra Leone became able to test for Ebola



U.S. Department of Health and Human Services  
Centers for Disease Control and Prevention

For references, see <http://www.cdc.gov/vhf/ebola/outbreaks/2014-west-africa/cost-of-ebola.html>