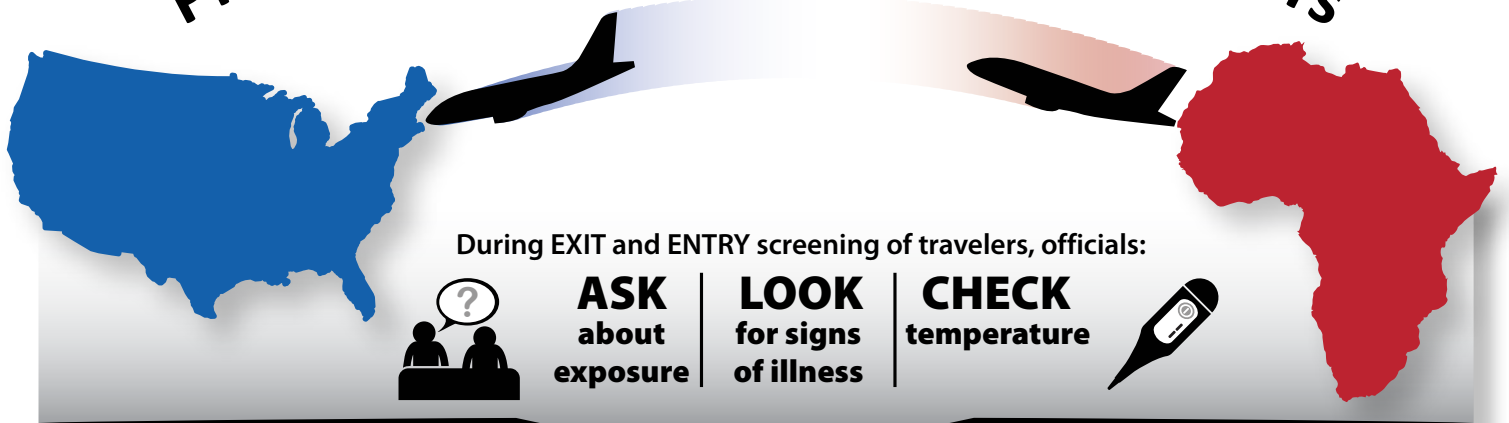
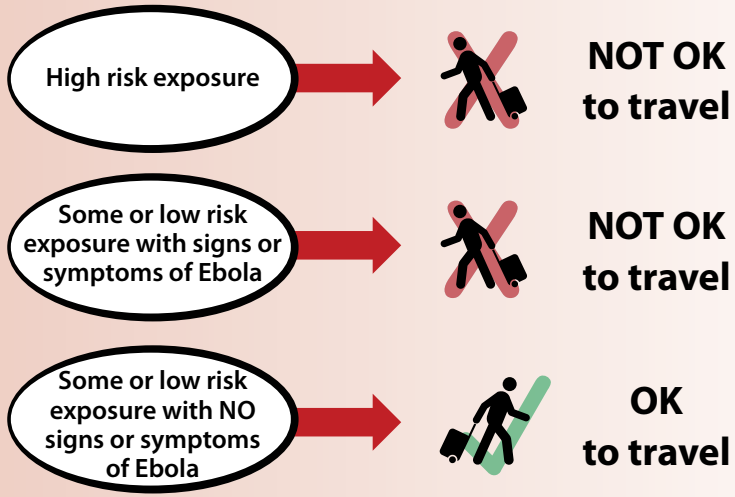


Preventing Ebola by Screening Travelers



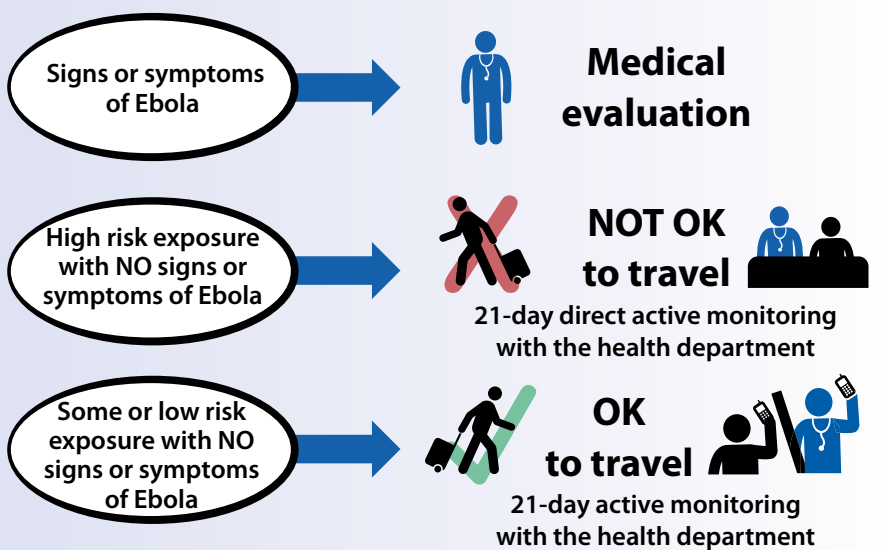
West Africa EXIT screening

All travelers leaving Guinea, Liberia, and Sierra Leone will be screened before getting on their flight.



United States ENTRY screening

Travelers coming to the US from countries with Ebola outbreaks (such as Guinea, Liberia, and Sierra Leone) fly into one of the following airports for entry screening: New York's JFK, Newark, Washington-Dulles, Chicago O'Hare, and Atlanta.



More information about screening and monitoring travelers can be found at: www.cdc.gov/vhf/ebola/travelers/ebola-screening-factsheet.html. Definitions of high, some, and low risk exposure can be found at: www.cdc.gov/vhf/ebola/pdf/ebola-guidance-travelers.pdf.

